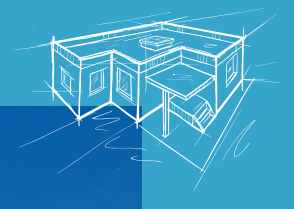


ROCKWOOL® is the registered trademark of ROCKWOOL Group.



ROCKWOOL Building Insulation



ROCKWOOL CHINA

Factory:

ROCKWOOL Firesafe Insulation (Guangzhou) Co., Ltd.
No.3 Taihua Street, Yonghe District, Guangzhou Economic And
Technological Development Zone, Guangdong Province (511356)
Tel: (+86) 20 8298 6668 Fax: (+86) 20 8298 6877

Beijing
Tel: (+86) 10 6590 6077

Shanghai
Tel: (+86) 21 6211 6725

Guangzhou
Tel: (+86) 20 3839 3636
Fax: (+86) 20 3839 3637

Hong Kong
Tel: (+852) 2754 0877

Taiwan
Tel: (+886) 4 2253 6866

Philippine
Tel: (+63) 2 7710 650
Fax: (+63) 2 7710 649

RW-CN/BA-BRO/08-2017/1/EN



www.rockwool.com.cn ROCKWOOL Wechat



1 Company profile



2 External walls



ETICS with Stone wool slab /lamella
Ventilated facade, Modular curtain wall
Light steel structure wall insulation, Sandwich wall

3 Roofs



Flexible waterproof membrane roof system
Concrete flat roof
Single/double skin metal roof
Pitched tile roof, Sandwich panel roof

4 Internal structure



Light steel frame partition wall system
Sandwich panel partition wall
Floor insulation

5 Passive fire protection

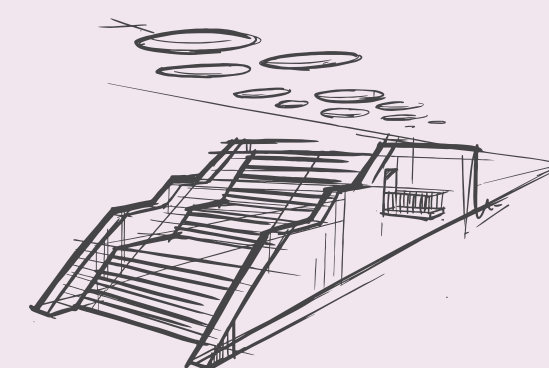


Curtain wall fire protection,
Fire resistant partition, Fire door

6 Other fire proof insulation



Roof, Ceiling, Sandwich wall,
Attic insulation



ROCKWOOL Group

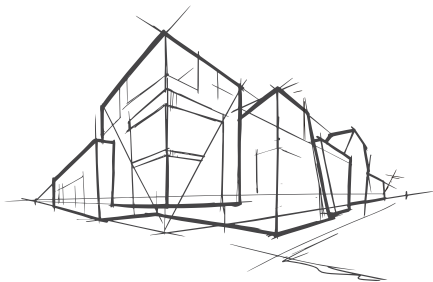
We are the world leading stone wool manufacturer, with innovative products and systems, committed to protecting the environment and improving people's life.

ROCKWOOL Group is a global leader in thermal insulation, providing world-class products and solutions to building structures. Our products help secure fire safety and reduce energy consumption of buildings, coupled with excellent performance in sound absorption, noise reduction and indoor comfort. ROCKWOOL provides green solutions for the horticulture industry, special engineered stone wool fiber for the manufacturing industry, as well as effective insulation solutions for refining and processing industries, marine and offshore industries and other areas. We also have acoustic and vibration reduction system for modern infrastructure construction.

ROCKWOOL Group has a major market share in Europe, but we have also actively expanded our market in Russia, North America, India and East Asia, with more production, sales and service activities operating locally. ROCKWOOL Group's global network helps promote our products and systems around the world.

In China, ROCKWOOL provides a wide range of products for building insulation and other industrial areas that cater to different applications. We have more than 20 years of exploration and operation in China. ROCKWOOL stone wool is integrated with several excellent strengths: fire resilience, thermal properties, acoustic capabilities, durability and sustainability etc. Our products can stand the test of time. They protect buildings and people in any environment while reducing the carbon footprint. ROCKWOOL protects the environment and makes our society develop with a more sustainable approach.

ROCKWOOL China has stone wool production a site in Guangzhou with an annual capacity of 60,000 tons and subsidiaries located in Beijing, Guangzhou, Hong Kong, Taiwan, Philippines and other major cities at present.



38

countries with business operation

28

stone wool factories in production

10,500

employees around the world

80 — 1,500 times

Ratio between energy saved during product life against energy used for production per unit is 80-1,500 times



Stone Wool External Thermal Insulation Composite System

Stone wool ETICS is the non-load-bearing fire insulation system, with stone wool slabs as its core material which are fixed to the external walls by adhesive, anchor, etc., The system consists of stone wool insulation layer, fixation material (adhesives, anchors, etc.), rendering material (glass fiber mesh embedded, etc.) and finishing coat. With high fire-resistance rating, the system also has excellent performance in thermal insulation, as well as durability, safety and reliability.

Applications

Stone wool ETICS is suitable for new built and retrofit projects. It can be applied to frame, masonry and other building structures, and non-transparent curtain wall insulation system.

Products

ROCKWOOL FacadeRock
ROCKWOOL FacadeRock DD/DD Plus

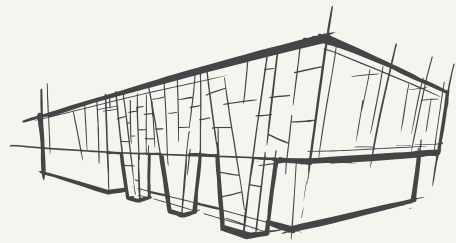
Features

- Excellent thermal insulation performance, minimize thermal bridges;
- Class A1 non-combustible;
- Non-flammable and no toxic smoke;
- Good air permeability makes external wall "breathe free";
- High tensile strength, good performance in resisting wind pressure, safe and reliable to use;
- Given same or higher strength and safety, the stone wool DD has lower density, which further reduces the weight and structural load with a lower cost;
- High water-repellency, low water absorption rate, good dimensional stability and durability;
- Excellent sound insulation and noise reduction, no corrosion to metal materials and building components;
- Easy to cut and saw;
- Non-toxic fiber, safe to use.

Product Range

Product code	Thickness (mm)	Length x Width (mm)
FR7.5	40 - 100	1200 x 600
FR10	40 - 100	1200 x 600
FR15	40 - 100	1200 x 600
FR-DD	50 - 150	1200 x 600
FR-DD Plus	50 - 120	1200 x 600

Note: Please contact local sales representative for products of size not listed in the table.



Stone Wool Lamella External Thermal Insulation Composite System

Stone wool lamella ETICS is a non-load-bearing fire insulation system, with stone wool lamella as its core material which are fixed to the external walls. The system includes insulation layer of stone wool lamella, fixation material (adhesives, anchors, etc.), rendering material (glass fiber mesh embedded, etc.) and finishing coat. With high fire-resistance rating, the system also has excellent performance in thermal insulation, as well as durability, safety and reliability.

Applications

Stone wool lamella ETICS is suitable for new built and retrofit projects. It can be applied to multiple building structures, such as frame and masonry. Low density and high strength make stone wool lamella especially suit to high-rise buildings. The material can also be used as fire resistant barrier for other external wall insulation systems, to fully improve the fire safety of external walls.

Products

ROCKWOOL RockBarrier (RB-L)

Features

- High tensile strength, excellent performance in resisting wind pressure;
- Excellent insulation performance, minimize thermal bridges;
- Class A1 non-combustible;
- Non-flammable and no toxic smoke;
- Excellent air permeability makes external wall system "breathe free";
- High water-repellency, low water absorption rate, good dimensional stability, contributing to its durability;
- No corrosion to metal materials and building components;
- Light weight, easy to cut and saw;
- Non-toxic fiber, safe to use.

Product Range

Product code	RB-L100	RB-L120
Nominal density (kg/m³)	100	120
Thickness (mm)	1100×150 1100×200	1100×150 1100×200
L x W (mm)	50-120	50-120

Note: Please contact local sales representative for products of size not listed in the table.



Good insulation, tensile strength with excellent performance in resisting wind pressure

Ventilated Facade insulation System

Ventilated façade insulation system in this brochure refers to non-transparent curtain wall system with stone wool as its insulation material installed between the façade and a solid substrate such as concrete wall or brick wall to which the stone wool is mechanically fixed.

Applications

The system is suitable for both new buildings and energy saving retrofit projects. It can also be applied to multiple building structures, such as frame and masonry.

Products

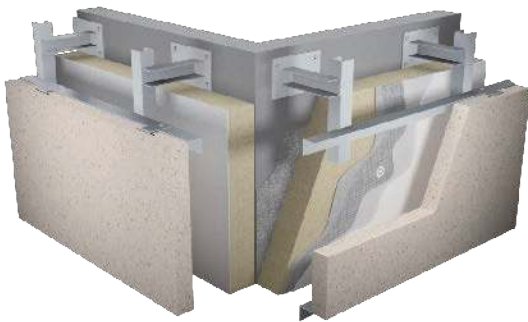
ROCKWOOL VentRock 100
ROCKWOOL VentRock DD

Features

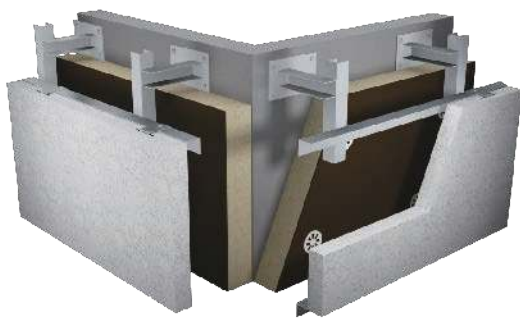
- Excellent thermal insulation properties, contribute to energy saving;
- Class A1 non-combustible, no toxic smoke;
- High tensile strength, suitable for dry hanging system;
- Remarkable air permeability makes the external wall “breath free”;
- High water-repellency, low water absorption rate, good dimensional stability, contributing to its durability;
- No corrosion to metal materials and building components;
- Good acoustic and vibration damping property;
- Non-toxic fiber, safe to use.



Metal façade insulation system



Composite panel curtain wall insulation system



Stone curtain wall insulation system

Product Range

Product code	Thickness (mm)	Length x Width (mm)
VR100	50-150	1200 x 600
VR-DD	50-150	1200 x 600

Note: Please contact local sales representative for products of size not listed in the table.

Curtain Wall Fire Protection Insulation System

Curtain wall fire protection insulation system refers to the fire resistant insulation which stops fire and smoke from penetrating through construction structures in curtain wall systems. The system can bring curtain walls with good thermal insulation and excellent fire performance.

Applications

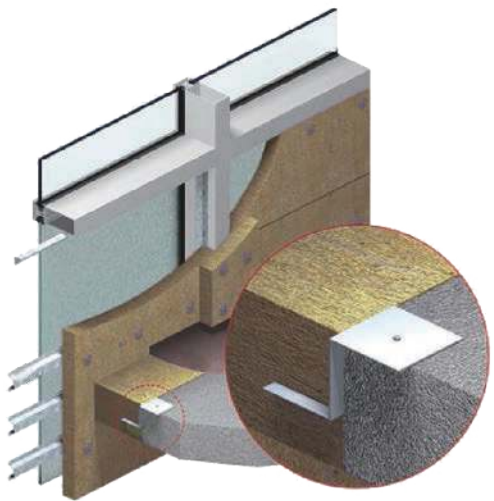
RockSafe series is used to seal any gaps in construction where smoke or fire may penetrate. Common applications include the isolation between building levels in curtain wall application. CurtainRock series is used as an insulation and fire resistance panel on the backpan of spandrel panel of the curtain wall system.

Products

ROCKWOOL CurtainRock
ROCKWOOL RockSafe

Features

- Class A1 non-combustible;
- Fire-resistance up to 2 hours;
- No corrosion to metal materials and building components;
- Good acoustic and vibration damping property;
- Non-toxic fiber, safe to use.



Product Range

	RS Series			CUR Series		Standard
Product code	RS60	RS80	RS110	CUR110	CUR128	
Nominal density (kg/m³)	60	80	110	110	128	GB/T 19686
Thickness (mm)	135	135	100	50, 75	100	GB/T 5480
L×W (mm)	1200 x 600			1200 x 600		GB/T 5480

Note: Please contact local sales representative for products of size not listed in the table.

Light Steel Structure Insulation System

Light steel structure, often used in commercial and industrial buildings, is introduced to the residential buildings as well in recent years and becomes a promising trend of residential buildings. It has prominent advantage of easy handling and installation, good structural performance, excellent seismic resistant property and high floor area utilization. ROCKWOOL ThermalRock can be installed in the light steel wall frame, serving as a guardian to ensure fire safety, acoustics and water resistant performance. It is one of the most suitable insulation materials for light steel wall structure.

Applications

Light steel structure is one of important structures encouraged by government for prefabricated buildings, widely seen in commercial, industrial and residential buildings.

Products

ROCKWOOL ThermalRock S
ROCKWOOL Acoustic DD/DD Plus

Features

- Class A1 non-combustible;
- Low thermal conductivity and good thermal insulation;
- Remarkable air permeability, less moisture in the walls and indoor environment;
- No corrosion to metal materials and building components;
- Good acoustic and vibration damping property;
- Non-toxic fiber, safe to use.



Product Range

ROCKWOOL ThermalRock S

Thickness (mm)	Length× Width (mm)	Nominal density (kg/m³)
50, 75, 100	1200 x 600	40 -140

ROCKWOOL Acoustic DD/DD Plus

Product code	Nominal density (kg/m³)	Thickness (mm)	Length× Width (mm)
AS-DD	≤65	50-150	1200 x 600
AS-DD Plus	≤100	50-150	1200 x 600

Note: Please contact local sales representative for products of size not listed in the table.

Sandwich Panel Wall

The factory prefabricated stone wool sandwich panel with different surface outlook can be easily installed by fixing mechanically to building substrates or structures. The sandwich panel wall system acts as a building envelop which provides desirable outlook, reliable fire resistant property and durable thermal performance.

Applications

Sandwich panel external wall system is a good option for various commercial, public and industrial buildings, and can act as a fully-functional metal wall. It is also suitable for extension, reconstruction and temporary or mobile buildings. Thickness of stone wool sandwich panel is flexible to meet different requirements of fire and thermal resistance in projects.

Products

ROCKWOOL ConRock
ROCKWOOL StrucRock

Features

- Class A1 non-combustible, no toxic smoke;
- Excellent compressing, stretching and shearing resistance
- Low thermal conductivity, superior thermal insulation;
- Remarkable air permeability, less moisture in the walls and indoor environment
- Good acoustic and vibration damping property;
- Non-toxic fiber, safe to use.



Product Range

CR Series offers two types of products: L-Series is supplied by pre-cut lamella, S-Series by thick slab for customers with cutting equipment.

Product code	CR-L10.5	CR-L12	CR-L15
Nominal density (kg/m³)	105	120	150
L×W (mm)	1200×100		
Thickness (mm)	30-200		

Product code	CR-S10.5	CR-S12	CR-S15
Nominal density (kg/m³)	105	120	150
L×W (mm)	1200×1200, 1200×600		
Thickness (mm)	100	100	100

Note: Products in other size and thickness are available upon client's request.

Steel Deck Flexible Waterproof Membrane Roof

Steel deck flexible waterproof membrane roof is a single skin membrane roof system with stone wool as its insulation material mechanically fixed on to a steel deck.

Applications

The system is an ideal solution for commercial and industrial buildings, especially for new built and retrofit of steel structure roofs.

Products

ROCKWOOL HardRock;
ROCKWOOL RoofRock;
ROCKWOOL TopRock DD/DD Plus;
ROCKWOOL TopCover.

Features

- Class A1 non-combustible, heat resistant up to 1000°C, effective in preventing the spread of fire with no toxic smoke or gas produced;
- Excellent resistance to point load and compression, able to bear all types of loads;
- Low thermal conductivity, superior thermal insulation;
- Good dimensional stability, no shrinking, bending or deforming over time, applied as the most stable base layer material, protecting waterproof material from any undesirable pressure;
- Given the same compression strength, TPR-DD/DD Plus has a lower density, reducing the structural load while offering a higher point load;
- Good acoustic and vibration damping property;
- Non-toxic fiber, safe to use.

Product Range

Product code	Nominal density (kg/m³)	Thickness (mm)	Length×Width (mm)
RR30	120	40-150	1200 x 600
HR60	160	40-100	1200 x 600
HR80	180	40-100	1200 x 600
TPR-DD	≤150	50-150	1200 x 600
TPR-DD Plus	≤170	50-150	1200 x 600

Note: Please contact local sales representative for products of size not listed in the table.



Concrete Deck Flat Roof

Concrete deck flat roof system refers to the roof system with concrete deck as substrate, stone wool as insulation and flexible membrane or bitumen as waterproof layer on surface.

Applications

The system applies to the construction or retrofit of concrete roofs in civil, commercial and industrial construction. Since concrete roof has a high heat storage capacity, stone wool insulation layer can create a comfortable environment with stable temperature.

Products

ROCKWOOL HardRock;
ROCKWOOL RoofRock;
ROCKWOOL TopRock DD/DD Plus;
ROCKWOOL TPR TopPlate and TPR Lamel;
ROCKWOOL TopCover.

Features

- Class A1 non-combustible, no toxic smoke;
- Excellent resistance to point load and compression, able to bear all types of loads, convenient for regular maintenance;
- Low thermal conductivity, superior thermal insulation;
- Good dimensional stability, not subject to different climates;
- Given the same compression strength, TPR-DD/DD Plus has a lower density, higher point load capacity, better protection of the entire roof system, leakage avoided;
- No partition layer needed between waterproof layer and stone wool insulation layer, compatible with various waterproof membranes;
- Good acoustic and vibration damping property;
- Non-toxic fiber, safe to use.

Product Range

Product code	Nominal density (kg/m³)	Thickness (mm)	Length×Width (mm)
RR30	120	40-150	1200 x 600
HR60	160	40-100	1200 x 600
HR80	180	40-100	1200 x 600
TPR-DD	≤150	50-150	1200 x 600
TPR TopPlate	180	40	1200 x 600
TPR Lamel	65	50-300	1200 x 200

Note: a) Please contact local sales representative for products of size not listed in the table.
b) Please contact local sales representative for more details about ROCKWOOL flat roof insulation solution of TPR-L system (TPR TopPlate and TPR Lamel).



Metal Skin Roof

Single-skin and double-skin metal roofs are commonly seen in metal roof systems. In single-skin system, stone wool insulation is paved on an aluminum foil sheet on top of steel mesh which is attached to purlins. The metal roof skin is installed on top of the insulation. Double-skin metal roof is a system with vertical seam or aesthetic corrugated panel on top, stone wool as the insulation layer, and fixed to the profiled steel sheet at the bottom.

Applications

Metal skin roof is widely applied to the roof insulation of large public building, factory and warehouse.

Products

ROCKWOOL ThermalRock S

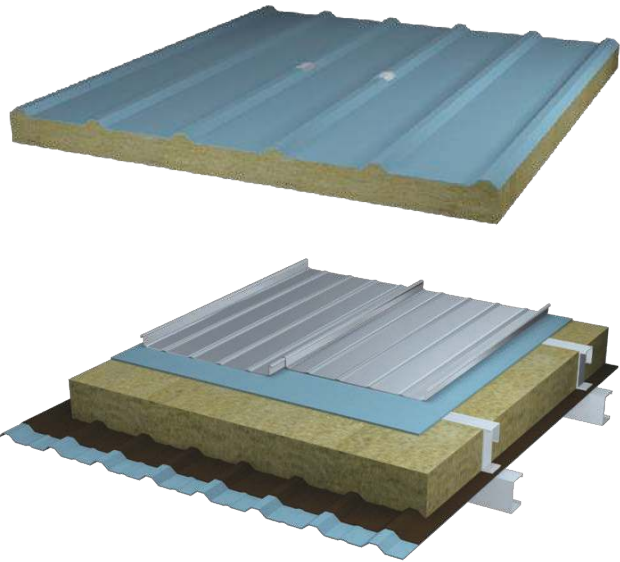
Features

- Class A1 non-combustible, no toxic smoke;
- Low thermal conductivity, superior thermal insulation;
- Remarkable air permeability;
- No corrosion to metal materials and building components;
- Good acoustic and vibration damping property;
- Non-toxic fiber, safe to use.

Product range

Thickness (mm)	Length × Width (mm)	Nominal density (kg/m³)
50,75,100	1200×600	40-140

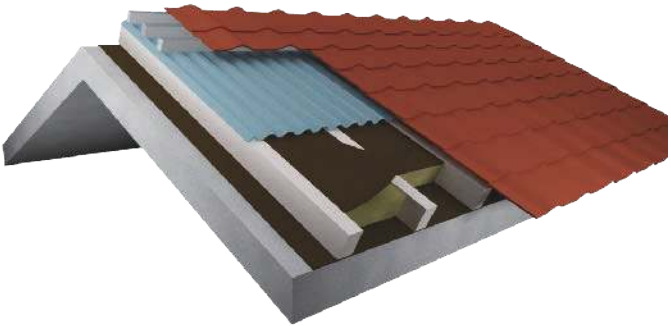
Note: Please contact local sales representative for products of size not listed in the table.



Class A1 non-combustible, no toxic smoke;

Pitched Tile Roof

It is a common application in the roofing construction which has a slope ratio of more than 10%. Tile roof system consists of roof substrate, stone wool insulation layer, waterproof liner layer and different types of tiles. The substrate is covered with stone wool insulation layer by adhesive mortar, which can also be installed with angle steel bars to hold the insulation material.



Applications

Tile roof usually has certain slope ratio which makes the design and installation differ from flat roof system. It is commonly found in low-rise and multi-floor residential buildings.

Products

ROCKWOOL ThermalRock S



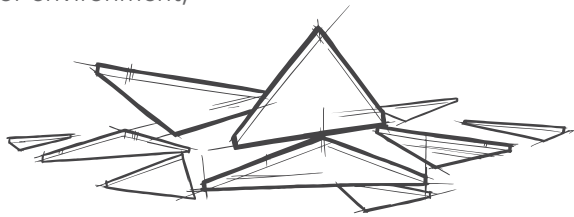
Features

- Class A1 non-combustible, no toxic smoke;
- Low thermal conductivity, superior thermal insulation;
- Remarkable air permeability, less moisture in the walls and indoor environment;
- No corrosion to metal materials and building components;

Product range

Thickness (mm)	Length × Width (mm)	Nominal density (kg/m³)
50, 75,100	1200 × 600	40-140

Note: Please contact local sales representative for products of size not listed in the table.



Sandwich Panel Roof

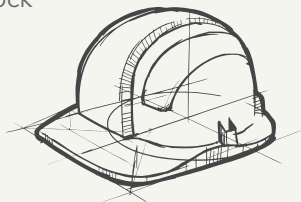
The prefabricated stone wool sandwich panel, fixed to the purlin with fasteners, makes the whole system a water proof and thermal insulated roof with good mechanical strength. The system integrates thermal insulation with load-bearing, waterproof and aesthetic features, as well as remarkable fire resistance, light weight, high strength and convenience during the construction.

Applications

Stone wool sandwich panel is usually seen in roof systems of clean rooms, cold storage, electronic and industrial factories.

Products

ROCKWOOL ConRock
ROCKWOOL StrucRock



Features

- Class A1 non-combustible, no toxic smoke;
- Excellent compressing, stretching and shearing resistance
- Low thermal conductivity, superior thermal insulation;
- Remarkable air permeability, less moisture in the walls and indoor environment
- Good acoustic and vibration damping property;
- Non-toxic fiber, safe to use.

Product Range

CR Series offers two types of products: L-Series is supplied by pre-cut panels, S-Series by thick panels for customers with cutting equipment.

Product code	CR-L10.5	CR-L12	CR-L15
Nominal density (kg/m³)	105	120	150
L×W (mm)	1200×100		
Thickness (mm)	30-200		

Product code	CR-S10.5	CR-S12	CR-S15
Nominal density (kg/m³)	105	120	150
L×W (mm)	1200×1200,1200×600		
Thickness (mm)	100	100	100

Note: Products in other size and thickness are available upon client’s request.

Light Steel Keel Partition Wall System

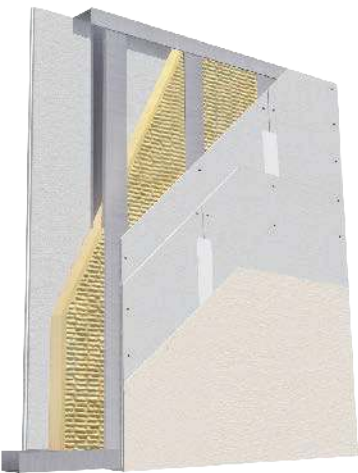
Light steel keel partition wall system is a non-load-bearing system fixed on the light steel frame by gypsum boards or calcium silicate boards with stone wool filled in between. As a versatile system, it can be used as any non-load-bearing partition walls in the building. Light steel keel partition wall system has been most widely used, with a wide range of excellent features such as light in weight, good sound insulation, fireproof performance and easy construction.

Applications

Widely used in a variety of internal partition walls, such as offices, shopping centers, cinemas, hotels, entertainment centers, reading areas, bedroom, etc., can create a comfortable and quite indoor environment, but also very suitable for building reconstruction or expansion Transformation and so on.

Products

ROCKWOOL ThermalRock S
ROCKWOOL Acoustic DD/DD Plus



Light steel keel partition wall system

Features

- Light in weight, good acoustic property, excellent fire protection, easy construction;
- Class A1 non-combustible, fire resistant up to 1000°C;
- Water repellent, moisture avoided;
- High strength, convenient for installation;
- High dimensional stability, even under high temperature of fire;
- Excellent air permeability, no corrosion to metal materials and building components;

Product Range

Product code	Nominal density (kg/m³)	Thickness (mm)	Length × Width (mm)
AS-DD	≤65	50-150	1200 × 600
AS-DD Plus	≤100	50-150	1200 × 600

Note: Please contact local sales representative for products of size not listed in the table.

Sandwich Panel Partition Wall

Stone wool sandwich panel is fixed to vertical keel in the process of horizontally installation, fixations on the top and at the bottom part of the panel are required. Additional finishing on sandwich panel is normally not required. The system is featured by fire protection, tidiness, aesthetics, as well as green, easy installation and recycling.

Applications

The sandwich panel acts as a fireproof and noise absorption partition or room division inside commercial, public or industrial buildings. The galvanized steel sheet on both sides of the sandwich panel makes it an ideal solution for buildings that have high hygiene standard and intactness requirements, such as facilities for food processing, medicine, electronics and chemical industries. Perforated sandwich panel can also be used in industrial and public space where high level of noise reduction is required.

Products

ROCKWOOL ConRock
ROCKWOOL StrucRock

Features

- Class A1 non-combustible, no toxic smoke;
- Excellent compressing, stretching and shearing resistance;
- Low thermal conductivity, superior thermal insulation;
- Remarkable air permeability, less moisture in the walls and indoor environment;
- Good acoustic and vibration damping property;
- Non-toxic fiber, safe to use.

Product Range

CR Series offers two types of products: L Series is supplied by pre-cut panels, S-Series by thick panels for customers with cutting equipment.

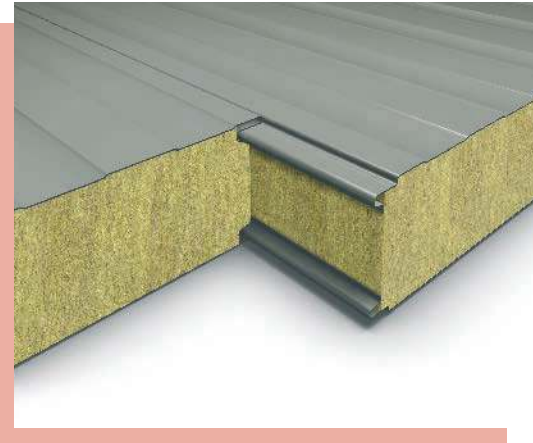
Product code	CR-L10.5	CR-L12	CR-L15
Nominal density (kg/m³)	105	120	150
L × W (mm)	1200×100		
Thickness (mm)	30-200		

Product code	CR-S10.5	CR-S12	CR-S15
Nominal density (kg/m³)	105	120	150
L × W (mm)	1200×1200,1200×600		
Thickness (mm)	100	100	100

Note: Products in other size and thickness are available upon client's request.



Sandwich panel partition wall



Floor Slab Insulation

Stone wool is filled into the wooden keels on the floor slab before flooring or paving other decorative materials to obtain a better thermal and acoustic performance. As a filling material, stone wool can effectively reduce floor noises while improving the floor's performance in fire protection and thermal insulation.

Applications

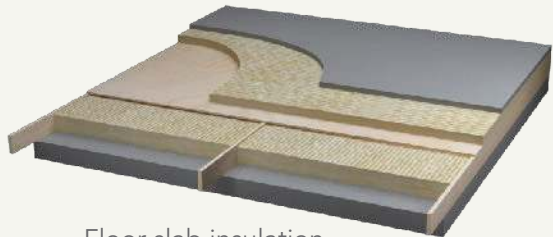
It is an ideal solution for the thermal resistance and noise reduction between indoor floor slabs. The class A non-combustible stone wool insulation can also contribute to the fire safety while providing a comfortable work and living indoor environment.

Products

ROCKWOOL ThermalRock S



Insulation system with better performance in sound and thermal insulation



Floor slab insulation



Floor slab insulation

Features

- Good performance in sound absorption, effective in reducing floor noise;
- Class A1 non-combustible, no toxic smoke;
- Low thermal conductivity, superior thermal insulation;
- Green and environmentally friendly, safe to use.

Product Range

Thickness (mm)	Length × Width (mm)	Nominal density (kg/m³)
50, 75, 100	1200 x 600	40-140

Note: Please contact local sales representative for products of size not listed in the table.

Fire seal, Fire Door, Fire Segregation

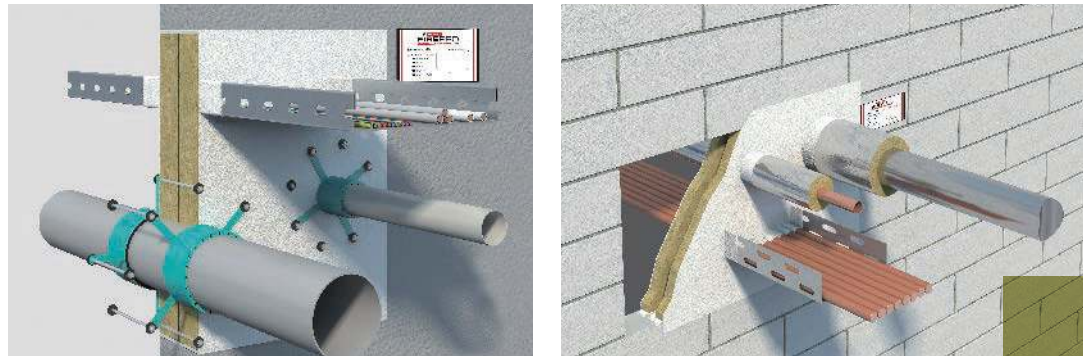
Stone wool or a combination of stone wool and other non-combustible materials is installed in a building to form a passive fire protection system which prevent or slow down the spread of fire within the building.

Applications

Stone wool is widely used to seal holes and openings on walls, as a filling in fire doors, fireproof partitions, fire segregation installations and other building parts with strict fire resistant standard.

Products

ROCKWOOL Conlit H



Features

- Remarkable resistance to fire with a melting point higher than 1200°C and fire resistance lasting for 2 hours;
- Class A1 non-combustible, no toxic smoke;
- Remarkable air permeability;
- Excellent thermal insulation;
- No corrosion to metal materials and building components;
- Good acoustic and vibration damping property;
- Non-toxic fiber, safe to use.

Product Range

	CL-H80	CL-H110	CL-H128
Nominal density	80kg/m ³	110kg/m ³	128kg/m ³
Thickness (mm)	50, 75, 100		
L × W (mm)	1200×600		

Note: Please contact local sales representative for products of size not listed in the table.

Roof, Ceiling, Sandwich wall, Attic insulation

Stone wool is installed inside the roof, ceiling, sandwich wall, attic and other parts of building, providing fire protection, thermal and sound insulation. It is designed to create a better environment for living and working with enhanced fire safety.

Applications

It applies to building structures that requires sound, fire and thermal insulation, e.g. roof, ceiling, sandwich wall and attic.

Products

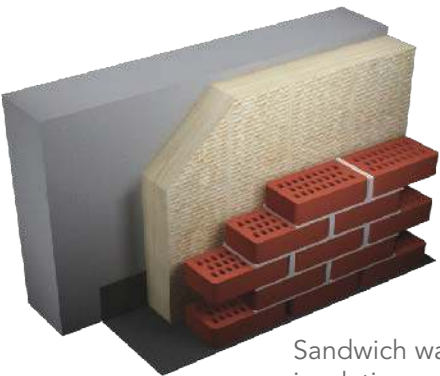
ROCKWOOL ThermalRock S



Roof and ceiling insulation



Attic insulation



Sandwich wall insulation

Features

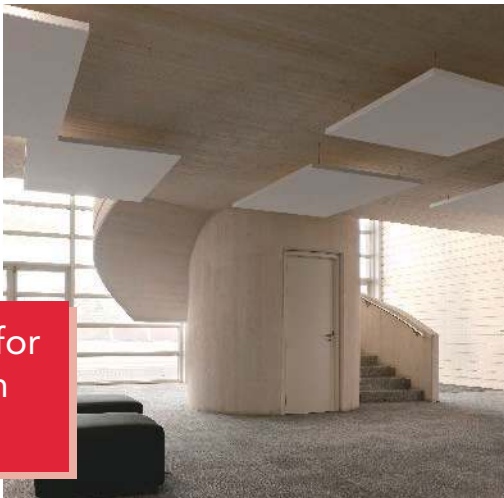
- Class A1 non-combustible, no toxic smoke;
- Excellent compressing, stretching and shearing resistance;
- Low thermal conductivity, superior thermal insulation;
- Remarkable air permeability, less moisture in the walls and indoor environment;
- Good acoustic and vibration damping property;
- Non-toxic fiber, safe to use.

Product Range

Thickness (mm)	Length×Width (mm)	Nominal density (kg/m ³)
50, 75, 100	1200 x 600	40-140

Note: Please contact local sales representative for products of size not listed in the table.

A better environment for living and working with enhanced fire safety



ROCKWOOL Projects

Project	Location	Application	Product	Time of delivery
Shanghai Henglong Plaza	Shanghai	Passive fire protection	RS	2000
Shenzhen Huawei	Shenzhen	Building insulation	TR	2002
Guangzhou Baiyun International Airport	Guangzhou	Building insulation	TR	2003
Beijing Olympic Village	Beijing	Building insulation	TR	2006
Shanghai World EXPO Village	Shanghai	ETICS	FR	2008
Shenzhen Universiade Center Stadium	Shenzhen	passive fire protection	RS	2009
Tianjin Meijiang Convention and Exhibition Center	Tianjin	Sandwich panel	CR	2009
Inner Mongolia Hongyun Cigarette Factory	Ulan Hot	Sandwich panel	SR	2009
Suzhou Xukou Middle School	Suzhou	ETICS	RB	2010
Hysan Place	Hong Kong	Building insulation	TR	2010
Hopson Xiaoyun Road NO.8	Beijing	ETICS	RB	2010
CCTV attached building reconstruction	Beijing	Passive fire protection	RS	2011
Renji Hospital of Shanghai Jiaotong University School of Medicine	Shanghai	ETICS	FR	2011
Hefei Cigarette Factory of China Tobacco Anhui	Hefei	Sandwich panel	SR	2011
Daqing No.9 Oil Production	Daqing	ETICS	RB	2011
Jinghope villa of Jinghope	Suzhou	ETICS	RB	2011
Country Garden Phoenix Hotel, Tianjin	Tianjin	Flat roof insulation	HR	2012
Beijing Institute of Technology	Beijing	ETICS	RB	2012
Shenyang New World International Garden	Shenyang	ETICS	RB	2012
Dalian Infiniti Factory	Dalian	Flat roof insulation	HR	2013
Mars Food Factory in Beijing	Beijing	Flat roof insulation	HR	2013
Mingle Place Hotel	Hong Kong	Building insulation	TR	2013
Sanya Shanhaitian Hotel	Sanya	Building insulation	TR	2013
Gansu Agricultural University	Lanzhou	ETICS	FR	2014
Guangzhou Benz Logistic Warehouse	Guangzhou	Flat roof insulation	HR	2014
SAIC Volkswagen Engine Factory	Shanghai	Flat roof insulation	HR	2014
China Merchants Securities Tower	Shenzhen	passive fire protection	RS	2014
Tianjin Aiguoli Community Renovation	Tianjin	ETICS	RB	2014
Wuhan IKEA	Wuhan	Building insulation	TR	2014
Shanghai Pudong Disney Store	Shanghai	Building insulation	TR	2014
Disney Fantasyland	Shanghai	Building insulation	TR	2014
Oceanwide International Residential District-Songhai Garden	Wuhan	Building insulation	VR	2015
Shenyang New World EXPO	Shenyang	ETICS	FR	2015
Dalian Petrochina Mansion	Dalian	Building insulation	TR	2015
Guorui Plaza	Beijing	Building insulation	TR	2015
Dalin Power Plant	Taiwan	sandwich panel	CR	2015
Planning Exhibition Center of Nanjing Pukou Economic Development Zone	Nanjing	Building insulation	TR	2015
Shenyang Gemdale Borui Community	Shenyang	ETICS	FR	2015
The City College of Jilin Jianzhu University	Changchun	ETICS	FR	2015
Shanghai JW Marriott Hotel	Shanghai	Building insulation and PFP	TR/RS	2016
Xiamen Zhongshan Hosptial	Xiamen	Interior	TR	2017
Guangzhou CTF Finance Centre	Guangzhou	Passive fire protection	RS	2015-2017
Dongguan Huawei	Dongguan	Interior	TR-S	2017
Shenzhen Tencent Building of Binhai	Shenzhen	Building insulation and PFP	TR-S/RS	2015-2017
Shenzhen Pingan IFC	Shenzhen	Building insulation and PFP	TR-S/RS	2015-2017



Baiyun International Conference Centre, Guangzhou



Sofitel Hotel Guangzhou Sunrich, Guangzhou



Shanghai Bund Financial Centre, Shanghai



Nanshan Cultural Centre, Shenzhen



Hysan Place, Hong Kong



University of Hong Kong, Hong Kong



Galaxy SOHO, Beijing



PetroChina Tower, Beijing